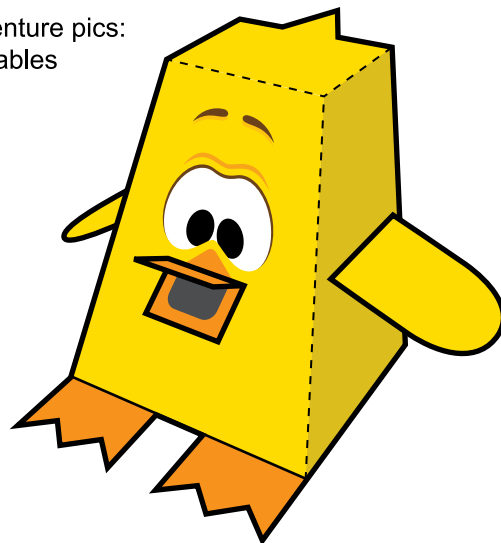




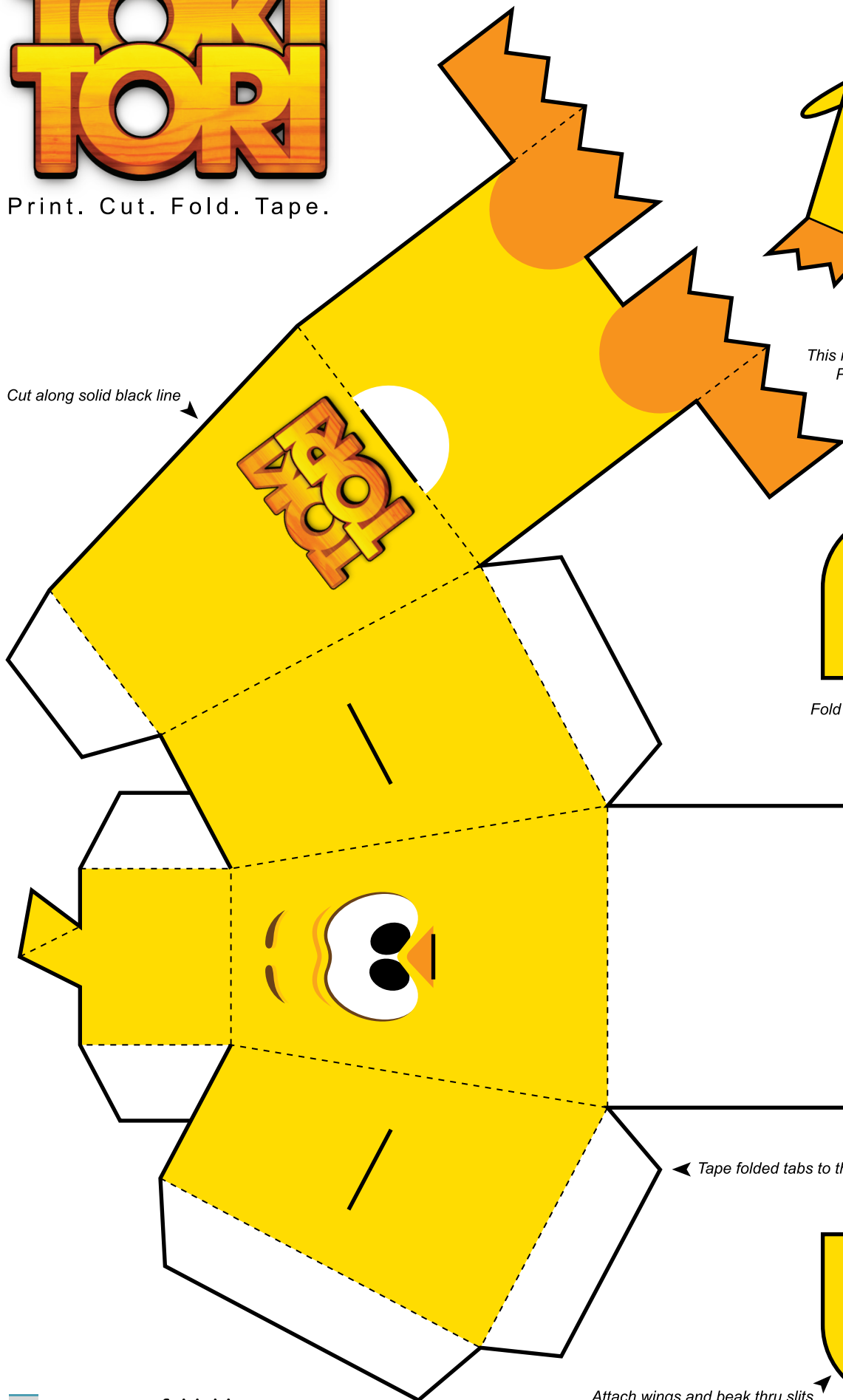
Upload your Paper Foldable **TOKI TORI** adventure pics:  
[www.flickr.com/groups/tokitoripaperfoldables](http://www.flickr.com/groups/tokitoripaperfoldables)

Print. Cut. Fold. Tape.

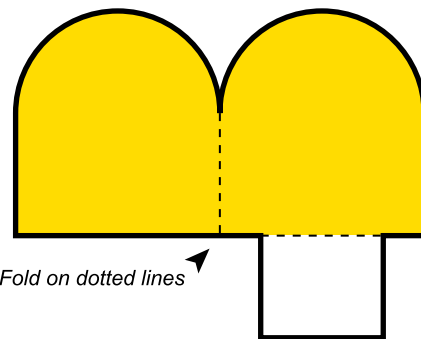


*This is what your assembled **TOKI TORI**  
Paper Foldable should look like!*

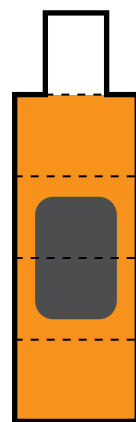
Cut along solid black line



Fold on dotted lines



Tape folded tabs to the inside



Attach wings and beak thru slits

